



# Offices Payment Schedule

*with Layout Plan*

VALID FROM 1 SEPTEMBER 2021 TILL 31 DECEMBER 2021

OFFICES





# About Gulberg *Islamabad*

گلبرگ اسلام آباد

Gulberg Islamabad is a project of Intelligence Bureau Employee's Cooperative Housing Society (IBECHS), There are many housing societies in Rawalpindi and Islamabad, But the beautiful location of Gulberg Islamabad is as beautiful as Islamabad . It is just 15 minutes drive from other parts of Islamabad ,and 5 minutes drive to G.T road . Gulberg Green and Gulberg Residential are two parts of the society. In Gulberg knowledge village there are many schools, colleges and universities which are under constructions, 5 star hotels, shopping malls are also under construction. Gulberg Islamabad is a place, where your dreams become true. The project was launched in 2005 and in 2009 its NOC from CDA was approved with Ref# "CDA/PLW-HS(127)/2009/257". Situated between Islamabad and Naval Anchorage, Gulberg Islamabad mostly consists of farmhouses that are divided over a span of 6 blocks namely Blocks A, B, C, D, E and Executive Block. Gulberg Islamabad is also one of the more newer parts of Islamabad that is currently in a state of metamorphosis, changing from a quaint and quiet part of Islamabad into a more desirable and attractive part of town. With more and more people gravitating towards Gulberg Islamabad, both for residential as well as commercial purposes.





# About The Magnus Mall



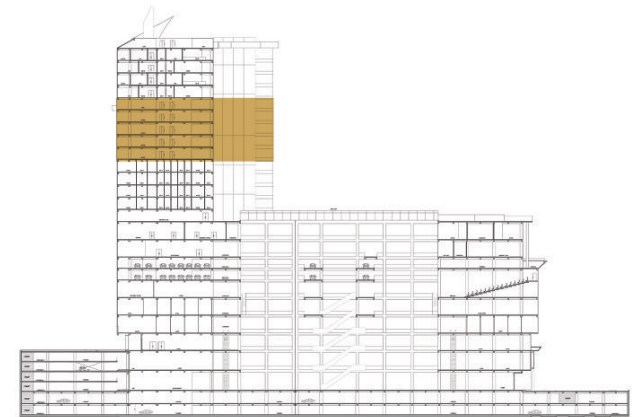
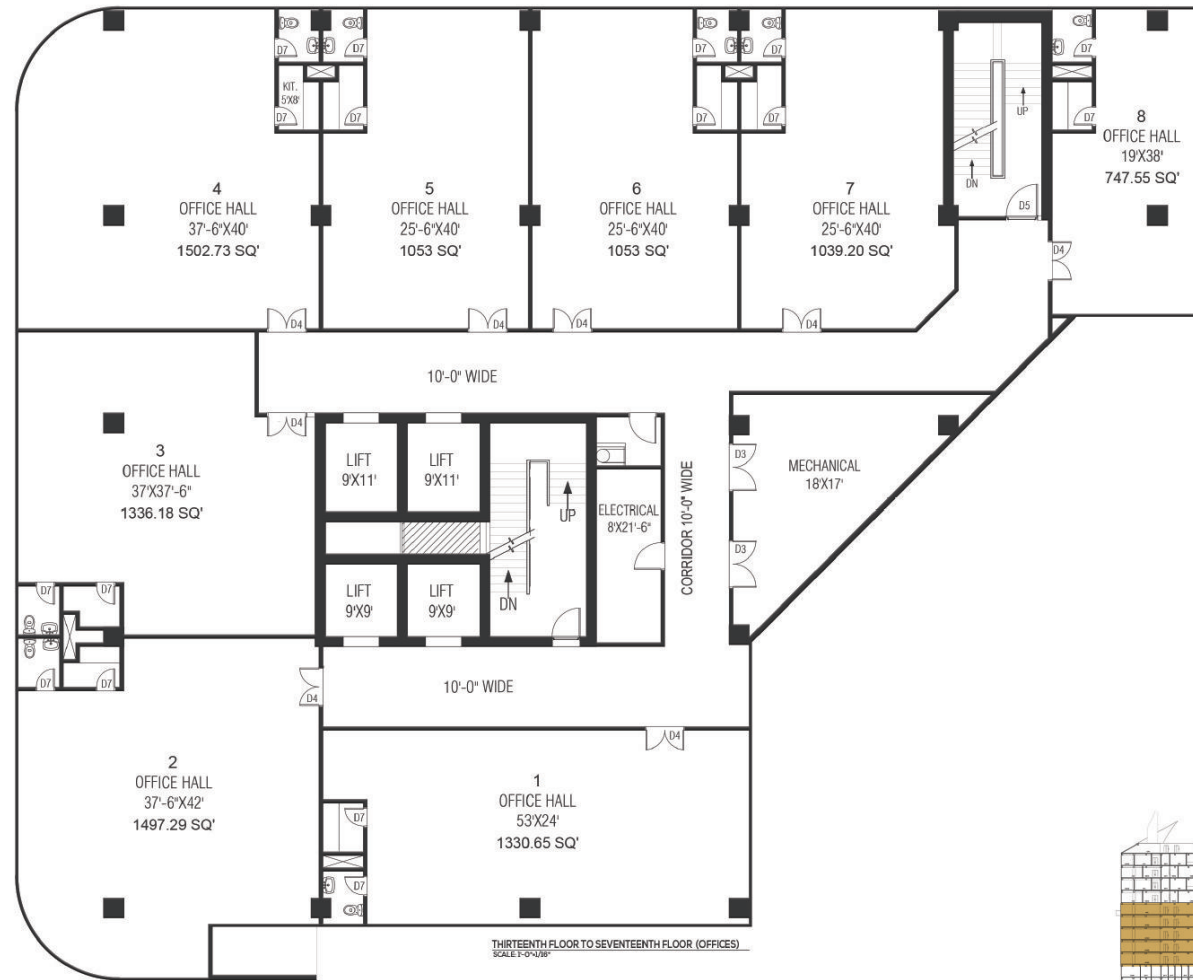
The Magnus Mall is one of the many new and upcoming projects undertaken by Ovaisco Builders. Soon to be one of the landmarks that define Gulberg Greens, the Magnus Mall serves as a skyscraper that consists of 26 floors that are a combination of hotels, restaurants, cinema, fun city, gym, car parks as well as corporate offices. One of the many factors that give the Magnus Mall its alluring appeal is the location that helps it become more of a Social Hub inside Gulberg Greens than just another building.

The Magnus Mall offers various leisure amenities to its residents and day to day visitors. The Magnus Mall is equipped with a fully functional gym packed with all kinds of exercise machines and equipment to help you get into shape. It also offers a high-end cinema service as well as its own mini indoor amusement park in the form of Fun City, you can find all the elements of a great amusement park including roller coasters and games, indoors.



# Thirteenth To Seventeenth Floor

*Layout Plan*





# Thirteenth To Seventeenth Floor

*Payment Schedule*

Unit Numbers	Size Sq.Ft	Booking 30%	1% X 47 Monthly	1% X 7 Half Yearly	8% On Possession	8% On Transfer	Total Amount
8	747.6	7,849,800	12,298,020 1 % = 261,660 x 47	1,831,620 1 % = 261,660 x 7	2,093,280	2,093,280	26,166,000
7	1039.2	10,911,600	17,094,840 1 % = 363,720 x 47	2,546,040 1 % = 363,720 x 7	2,909,760	2,909,760	36,372,000
5, 6	1053.0	11,056,500	17,321,850 1 % = 368,550 x 47	2,579,850 1 % = 368,550 x 7	2,948,400	2,948,400	36,855,000
1	1330.7	13,972,350	21,890,015 1 % = 465,745 x 47	3,260,215 1 % = 465,745 x 7	3,725,960	3,725,960	46,574,500
3	1336.2	14,030,100	21,980,490 1 % = 467,670 x 47	3,273,690 1 % = 467,670 x 7	3,741,360	3,741,360	46,767,000
2	1497.3	15,721,650	24,630,585 1 % = 524,055 x 47	3,668,385 1 % = 524,055 x 7	4,192,440	4,192,440	52,405,500
4	1502.7	15,778,350	24,719,415 1 % = 525,945 x 47	3,681,615 1 % = 525,945 x 7	4,207,560	4,207,560	52,594,500

## IMPORTANT NOTE

- 10% discount on full payment at the time of booking.
- All installments should be paid by allottees as per schedule and installment should be paid between 1st to 10th of every month.
- All payments should be made through cash / Cheque Payorder in favour of "The Magnus Mall LLP".

GET DETAILS FROM WHATSAPP

