

Four Towers

 **Maple Tower**
Block A



 **Oak Tower**
Block B



 **Pine Tower**
Block C



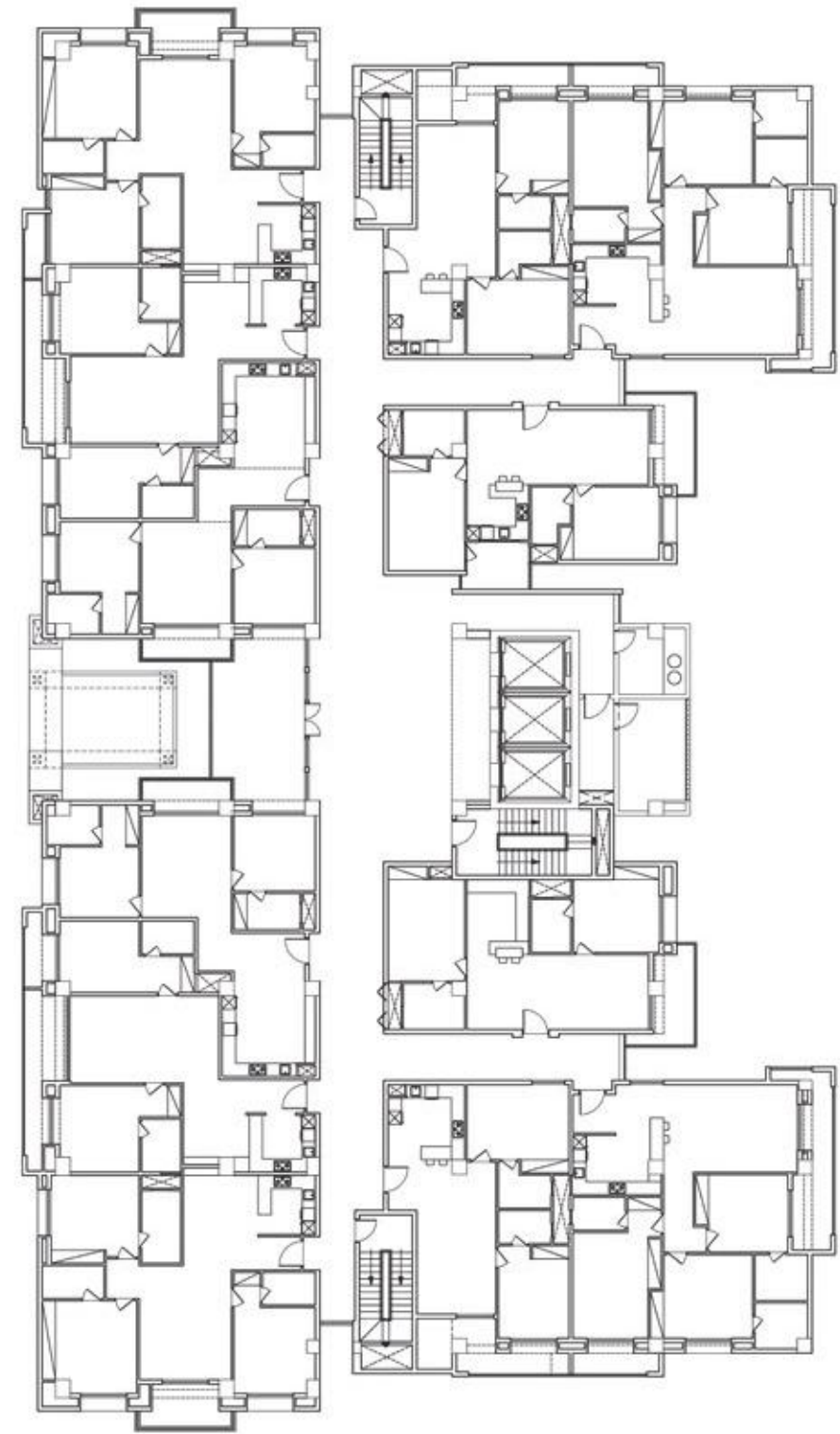
 **Palm Tower**
Block D



Four Seasons

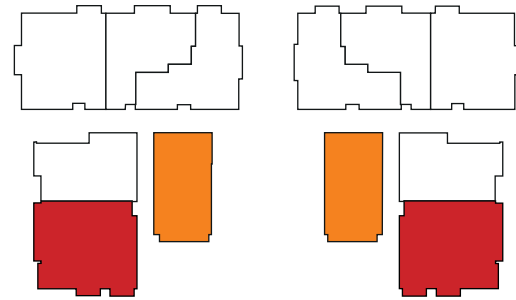


BLOCK A
2 Bed
1600 – 1850 sq. ft.
3 Bed
2130 – 2260 sq. ft





MAPLE TOWER - BLOCK A



A-01 & A-12

2 Bed Apartment: 1650 sq.ft.

1. Kitchen	:	9'-5" x 8'-4"
2. Lounge	:	27'-1" x 11'-4"
3. Bedroom # 1:	:	11'-7" x 17'-0"
4. Bathroom # 1:	:	9'-3" x 7'-0"
5. Balcony # 1 :	:	9'-5" x 7'-2"
6. Bedroom # 2:	:	13'-0" x 11'-0"
7. Bathroom # 2:	:	6'-0" x 8'-8"
8. Balcony # 2:	:	5'-0" Wide



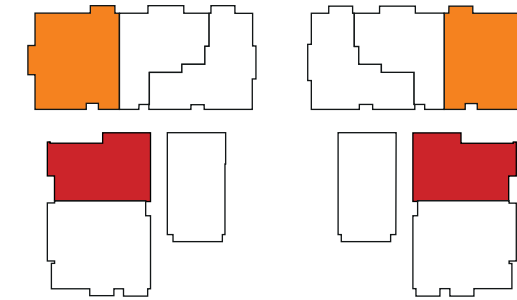
A-02 & A-11

3 Bed Apartment: 2260 sq.ft.

1. Kitchen	:	13'-5" x 9'-0"
2. Lounge	:	21'-10" x 13'-3"
3. Lobby	:	6'-6" x 5'-10"
4. Bedroom # 1:	:	14'-0" x 11'-9"
5. Bathroom # 1:	:	8'-0" x 6'-12"
6. Balcony # 1 :	:	6'-6" Wide
7. Bedroom # 2 :	:	13'-6" x 12'-8"
8. Bathroom # 2:	:	8'-0" x 6'-12"
9. Bedroom # 3:	:	11'-5" x 16'-0"
10. Bathroom # 3:	:	8'-0" x 5'-0"



MAPLE TOWER - BLOCK A



A-03 & A-10

2 Bed Apartment: 1600 sq.ft.

1. Kitchen/Dinette:	:	11'-9" x 11'-4"
2. Lounge	:	12'-2" x 23'-0"
3. Bedroom # 1:	:	15'-6" x 11'-4"
4. Bathroom # 1:	:	8'-0" x 5'-0"
5. Bedroom # 2:	:	10'-9" x 14'-0"
6. Bathroom # 2:	:	8'-0" x 5'-0"
7. Balcony	:	5'-0" Wide



A-04 & A-09

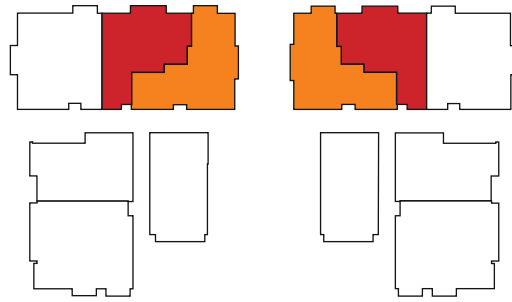
3 Bed Apartment: 2130 sq.ft.

1. Kitchen	:	8'-8" x 8'-1"
2. Lounge	:	14'-0" x 18'-3"
3. Dining	:	11'-4" x 8'-12"
4. Balcony	:	7'-0" Wide
5. Bedroom # 1:	:	13'-4" x 13'-3"
6. Bathroom # 1:	:	6'-0" x 11'-0"
7. Bedroom # 2:	:	14'-4" x 14'-0"
8. Bathroom # 2:	:	9'-4" x 5'-0"
9. Bedroom # 3:	:	12'-4" x 13'-0"
10. Bathroom # 3:	:	8'-0" x 5'-0"





MAPLE TOWER - BLOCK A



A-05 & A-08

2 Bed Apartment: 1850 sq.ft.

1. Kitchen	:	10'-0" x 8'-8"
2. Lounge	:	22'-6" x 13'-2"
3. Dining	:	10'-0" x 8'-8"
4. Bedroom # 1:		12'-0" x 13'-2"
5. Bathroom # 1:		6'-0" x 8'-0"
6. Bedroom # 2:		12'-0" x 10'-10"
7. Bathroom # 2:		8'-0" x 5'-0"

A-06 & A-07

2 Bed Apartment: 1650 sq.ft.

1. Kitchen/Dining:	:	14'-1" x 15'-11"
2. Lounge	:	13'-8" x 15'-5"
3. Balcony	:	5'-0" Wide
4. Bedroom # 1:		12'-0" x 10'-8"
5. Bathroom # 1:		8'-0" x 6'-0"
6. Bedroom # 2:		12'-4" x 11'-5"
7. Bathroom # 2:		10'-0" x 5'-6"

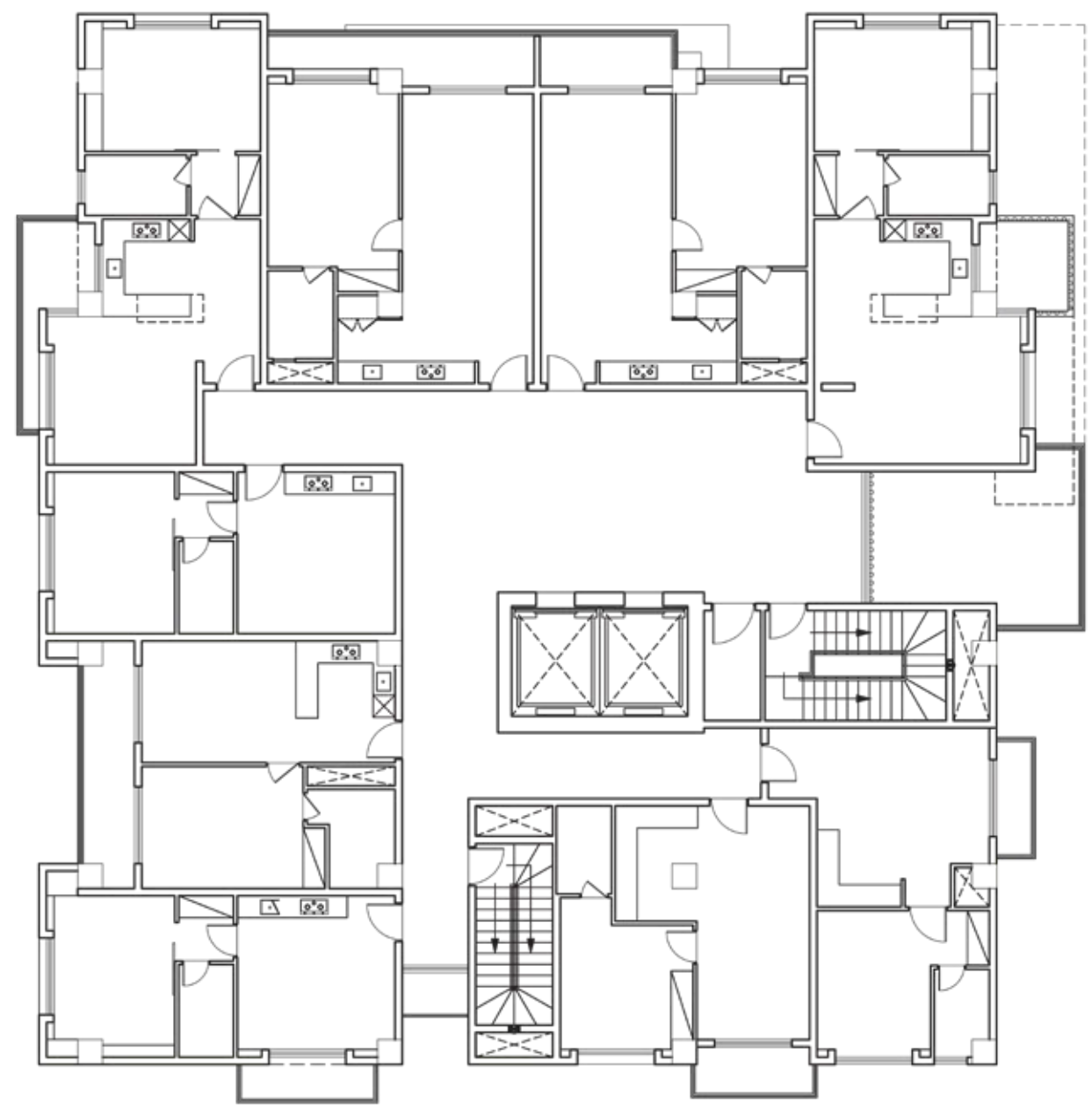
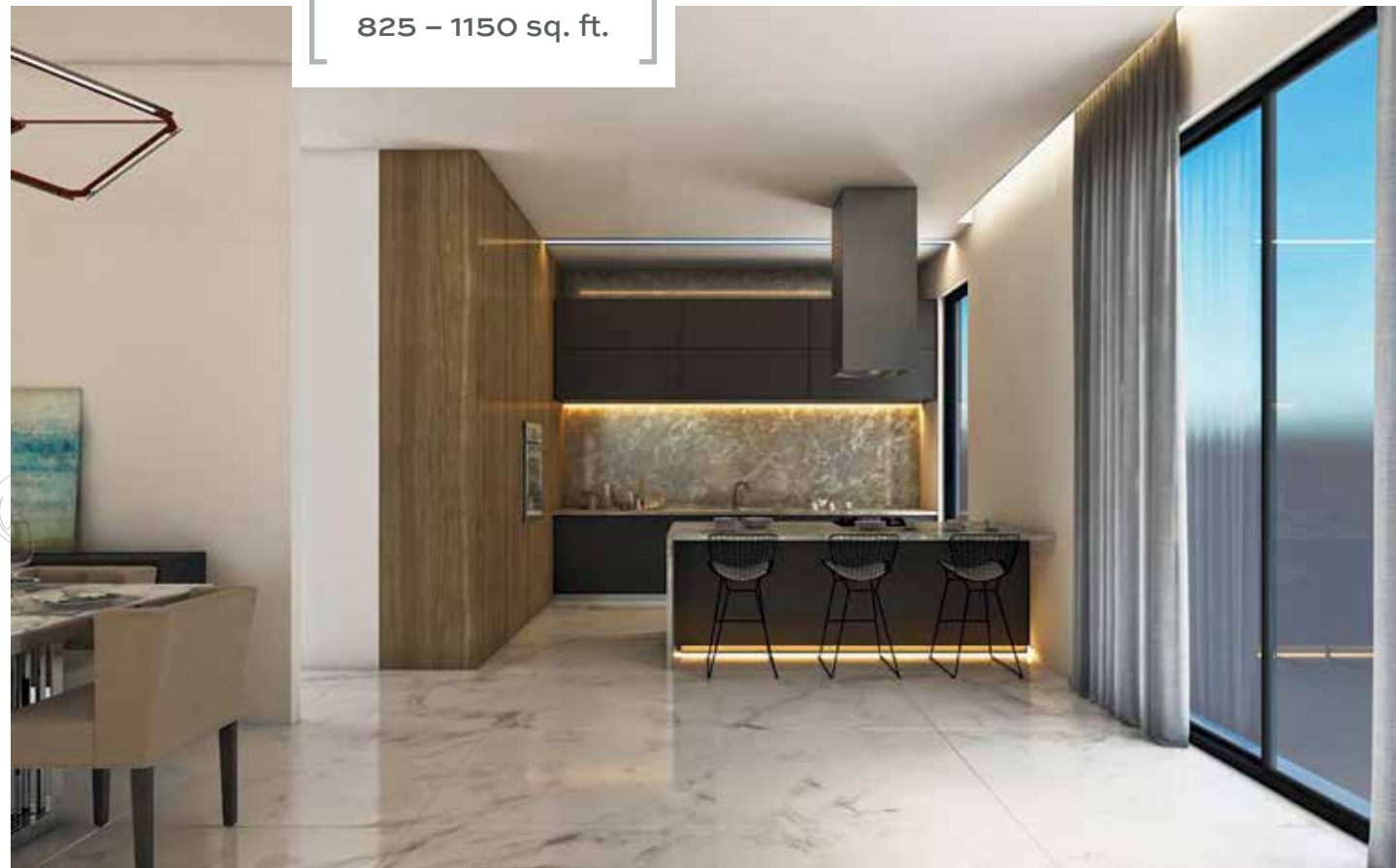


Bring Your Dreams to Reality, Today



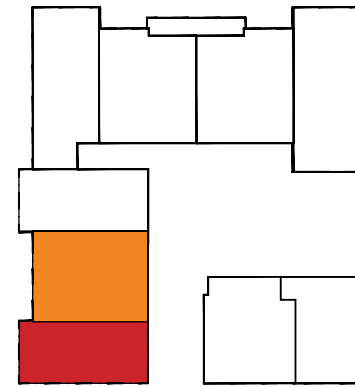


BLOCK B
1 Bed
825 - 1150 sq. ft.





OAK TOWER - BLOCK B



B-13

1 Bed Apartment: 875 sq.ft.

1. Bedroom	:	11'-0" x 14'-9"
2. Bathroom	:	5'-0" x 8'-5"
3. Lounge/Kitchenette	:	14'-4" x 14'-9"
4. Balcony	:	5'-0" Wide



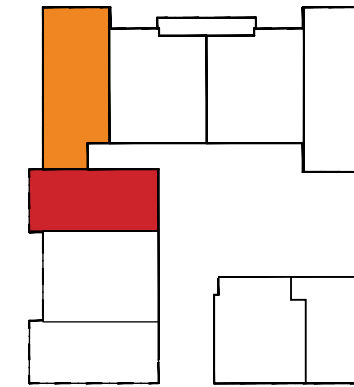
B-14

1 Bed Apartment: 1050 sq.ft.

1. Bedroom	:	14'-0" x 11'-1"
2. Bathroom	:	6'-0" x 11'-1"
3. Lounge	:	14'-0" x 11'-1"
4. Kitchenette	:	9'-0" x 11'-1"
5. Balcony	:	5'-10" Wide



OAK TOWER - BLOCK B



B-15

1 Bed Apartment: 825 sq.ft.

1. Bedroom	:	11'-0" x 14'-9"
2. Bathroom	:	5'-0" x 8'-5"
3. Lounge/Kitchenette	:	14'-4" x 14'-9"



B-16

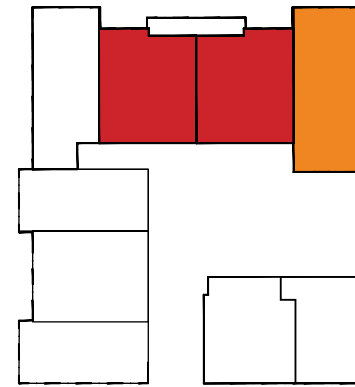
1 Bed Apartment: 1090 sq.ft.

1. Bedroom	:	14'-4" x 11'-0"
2. Bathroom	:	9'-3" x 5'-6"
3. Lounge	:	13'-0" x 13'-6"
4. Kitchenette	:	8'-0" x 8'-10"
5. Balcony	:	5'-0" Wide





OAK TOWER - BLOCK B



● B-17 & B-18

1 Bed Apartment: 1125 sq.ft.

1. Bedroom	: 11'-11" x 16'-1"
2. Bathroom	: 6'-0" x 9'-0"
3. Lounge	: 11'-11" x 15'-4"
4. Kitchenette	: 12'-6" x 5'-0"



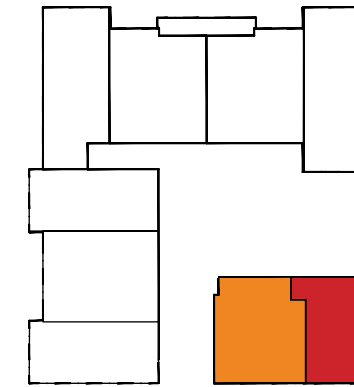
● B-19

1 Bed Apartment: 1150 sq.ft.

1. Bedroom	: 14'-4" x 11'-0"
2. Bathroom	: 9'-3" x 5'-6"
3. Lounge	: 18'-9" x 13'-6"
4. Kitchenette	: 8'-0" x 8'-10"
5. Balcony	: 5' Wide



OAK TOWER - BLOCK B



● B-20

1 Bed Apartment: 900 sq.ft.

1. Bedroom	: 10'-4" x 13'-4"
2. Bathroom	: 5'-0" x 8'-0"
3. Lounge	: 15'-8" x 11'-3"
4. Kitchenette	: 8'-9" x 3'-0"



● B-21

1 Bed Apartment: 925 sq.ft.

1. Bedroom	: 12'-1" x 11'-4"
2. Bathroom	: 5'-0" x 8'-4"
3. Lounge	: 10'-3" x 21'-3"
4. Kitchenette	: 7'-6" x 10'-6"
5. Balcony	: 4'-7" Wide

